

## Innovative Two-Step Negative Selection of Granulocyte Colony-Stimulating Factor–Mobilized Circulating Progenitor Cells: Adequacy for Autologous and Allogeneic Transplantation

By Alessandro Rambaldi, Gianmaria Borleri, Gianpietro Dotti, Piermario Bellavita, Ricardo Amaru, Andrea Biondi, and Tiziano Barbui

A major obstacle in purifying either autologous or allogeneic hematopoietic stem cells from granulocyte colony-stimulating factor (G-CSF) mobilized circulating progenitor cells (CPC) is represented by the huge cellularity present in each apheretic product. To obtain a significant debulking of unwanted cells from the leukapheresis, we developed a modified protocol of immune rosetting whereby human ABO-Rh-compatible red blood cells (RBCs) are treated with chromium chloride and then coated with murine monoclonal antibodies (MoAbs) against leukocyte antigens. When experiments were performed with leukaphereses obtained from normal donors or from T-cell acute lymphoblastic leukemia (T-ALL) patients, RBCs were coated with murine MoAbs against human mature myeloid cells (CD11b) and T cells (CD6); whereas, in the case of patients with B-precursor ALL, B-cell non-Hodgkin's lymphoma (B-NHL), or multiple myeloma (MM), RBCs were coated with anti-CD11b only. After incubation with CPC, rosetting cells (myeloid precursor cells, granulocytes, monocytes, and T cells) were removed by Ficoll-Hypaque density gradient centrifugation with a blood cell processor apparatus, COBE (Lakewood, CO) 2991. After this step, a significant reduction of the initial cellularity was consistently obtained (range, 72% to 97%), whereas the median absolute recovery of the CD34<sup>+</sup> cells was above 85% (range, 64 to 100), with a 10-fold relative enrichment ranging from 3% to 41%. In a second step, CPC can be further purged of contaminating T or B cells by incubation with lymphoid-specific magnetic microbeads (anti-CD2 and -CD7 to remove

T cells; anti-CD19 to remove B cells) and elution through a type-D depletion column (composed of ferromagnetic fiber) inserted within a SuperMACS separator device (Miltenyi Biotech, Bergisch-Gladbach, Germany). By this approach, a highly effective (three to four logs) T-cell depletion was achieved in all experiments performed with normal donors or T-ALL patients (median loss of CD3<sup>+</sup> cells: 99.8% [range 99.2 to 100]) and an equally efficient B-cell depletion was obtained from B-precursor ALL, B-NHL, or MM patients. At the end of the procedure the T- or B-cell depleted fraction retained a high proportion of the initial hematopoietic CD34<sup>+</sup> stem cells, with a median recovery above 70% (range 48% to 100%) and an unmodified clonogenic potential. In five patients (two follicular NHL and three ALL) the purified fraction of stem cells was found disease free at the molecular level as assessed by polymerase chain reaction (PCR) analysis of the t(14;18) chromosome translocation or clono-specific DNA sequences of IgH or T-cell receptor  $\gamma$  and  $\delta$  chain genes. Purified autologous and allogeneic CPCs were transplanted in three and six patients, respectively, who showed a prompt and sustained hematologic engraftment. In conclusion, this method represents a simple and reproducible two-step procedure to obtain a highly efficient purging of T or B cells from G-CSF expanded and mobilized CPCs. This approach might lead to the eradication of the neoplastic clone in the autologous stem cell inoculum as well as for T-cell depletion during allogeneic transplantation.

© 1998 by The American Society of Hematology.

IN THE NORMAL bone marrow the CD34<sup>+</sup> cell fraction contains virtually all the hematopoietic progenitor cells (HPCs).<sup>1</sup> After priming with hematopoietic growth factors (G-CSF or GM-CSF), either alone or in combination with high-dose chemotherapy, mobilized circulating progenitor cells (CPCs) expressing the CD34 antigen on the cell surface can be easily collected from peripheral blood in quantities approximately 10-fold higher than previously obtained from bone marrow.<sup>2</sup> The purification of human stem cells has clinical relevance for autologous<sup>3</sup> and allogeneic transplantation<sup>4</sup> and for the usage of the stem cells as vehicles for gene transfer.<sup>5,6</sup> High-dose chemotherapy and autologous transplantation are increasingly being used to treat patients with hematologic malignancies and solid tumors even though the neoplastic contamination of CPCs<sup>7-9</sup> may contribute to subsequent relapses.<sup>10</sup> Because many tumor cell types including multiple myeloma (MM), lymphomas, breast and ovarian cancer, and neuroblastoma do not usually express the CD34 antigen, CD34<sup>+</sup> positive selection may be effective for the purging of the autologous grafts. Different commercial devices are now available for laboratory and clinical scale enrichment of these cells by immunoaffinity columns or immunomagnetic beads, and preliminary clinical results have already been obtained by using purified CD34<sup>+</sup> cells for autologous transplantation.<sup>8,9,11-15</sup> More recently, some investigators started to analyze the feasibility of using purified CD34<sup>+</sup> cells for allogeneic transplantation.<sup>4,16,17</sup> In fact, allogeneic CPC preparations may provide the

possibility to obtain T-cell depleted fractions of stem cells while preventing an unacceptable loss of hematopoietic progenitors. Therefore, CD34<sup>+</sup> cell selection can be used as an efficient method for preventing graft versus host disease (GVHD) without an increased risk of graft failure or rejection.<sup>18</sup> Unfortunately, at least two major concerns are opposing a wide clinical use of purified CD34<sup>+</sup> cells. The immune reconstitution can be severely compromised if inadequate numbers of T and B cells are present in the graft, a problem that deserves particular

---

*From the Divisione di Ematologia e Centro Trasfusionale, Ospedali Riuniti Bergamo, Bergamo, Italy; and Clinica Pediatrica Università di Milano, Monza, Italy.*

*Submitted June 12, 1997; accepted October 28, 1997.*

*Supported in part by grants from the Associazione Italiana per la ricerca contro il cancro (AIRC); the Consiglio Nazionale per le Ricerche (CNR) Target Project on Biotechnology; the Associazione Paolo Belli, Lotta alla Leucemia; and Fondazione Tettamanti.*

*Address correspondence to Alessandro Rambaldi, MD, Division of Hematology, Ospedali Riuniti di Bergamo, Largo Barozzi, 1, 24100 Bergamo, Italy.*

*The publication costs of this article were defrayed in part by page charge payment. This article must therefore be hereby marked "advertisement" in accordance with 18 U.S.C. section 1734 solely to indicate this fact.*

© 1998 by The American Society of Hematology.

0006-4971/98/9106-0018\$3.00/0

attention, especially in the case of patients with nonhematologic malignancies. Moreover, most acute leukemia cell types express the CD34 antigen, thus preventing the use of this method of purification in the autologous setting.

The aim of this study was to develop an efficient, reproducible, and relatively inexpensive method for clinical scale preparation of CPC for transplantation procedures. Furthermore, the selective- and lineage-specific elimination of the neoplastic fraction from the autologous graft as well as the normal T cells from the allogeneic graft was the aim of the same procedure. This novel methodology consists of two distinct steps: in the first step, 85% of the initial cellularity (granulocytes, monocytes, and eventually T cells) is allowed to form rosettes with chromium chloride-treated human ABO-Rh-compatible red blood cells (RBCs) coated with murine monoclonal antibodies (MoAbs) antihuman CD11b (and CD6 when T-cell depletion is needed) and then removed by gradient sedimentation, without a significant loss of the CD34<sup>+</sup> cells present in the input. Subsequently, in step two, this debulked apheresis is very efficiently purged of unwanted B or T cells by the use of lineage-specific monoclonal microbeads.

## MATERIALS AND METHODS

### *Mobilization and harvesting of autologous or allogeneic CPCs.*

Autologous CPCs were collected in patients with non-Hodgkin's lymphoma (NHL), acute lymphoblastic leukemia (ALL), and MM, after different consolidation protocols of high-dose chemotherapy followed by rhG-CSF (Filgrastim; Roche, Milan, Italy) administration (5  $\mu$ g/kg/day), as previously described.<sup>19</sup> Leukapheresis was performed as soon as white blood cells (WBCs) were at least  $3.0 \times 10^9/L$  and peripheral blood CD34<sup>+</sup> cells were  $\geq 0.5\%$ . Ten liters of blood were processed daily through an indwelling central venous catheter (Groshong CV Catheter; Band Inc, Salt Lake City, UT) by using a cell separator COBE spectra (COBE, Lakewood, CO). Allogeneic CPCs were collected from HLA-identical, MLC-negative normal siblings upon treatment with  $2 \times 5 \mu$ g/kg/day of rhG-CSF administered subcutaneously every 12 hours for 5 or 6 consecutive days. The procedure of leukapheresis was started on day 5 (after the ninth dose of G-CSF) by using a COBE spectra cell separator. Ten liters of blood were processed daily by using the cubital vein in all donors, as previously described.<sup>20</sup> The absolute number of CD34<sup>+</sup> cells, lymphoid cells (T, B, and NK cells), and mature myeloid cells (granulocytes and monocytes) were evaluated daily in the peripheral blood by flow cytometry with fluorescein isothiocyanate conjugated (FITC) murine MoAbs against human CD34, CD3, CD19, CD56, CD11b, CD14, CD16, or negative control and a FACScan analyzer (Becton Dickinson, Mountain View, CA). In vitro colony assay for evaluation of erythroid and myeloid colony forming units was performed as previously described.<sup>19,20</sup> Informed consent was obtained from the patients and the donors by using forms approved by the Institutional Review Board. A fully detailed explanation of the potential risks and benefits concerning the collection of G-CSF mobilized CPCs for autologous and allogeneic transplantation was given to normal donors and the patients. Normal donors and patients were more than 18 years of age. The experimental use of apheresis products for immune rosetting and immunomagnetic depletion of T or B cells was begun when unmodified preparations of CPC (containing  $\geq 6 \times 10^6$  CD34<sup>+</sup> cells/kg of recipient body weight) were already harvested and cryopreserved.

**Immune rosettes.** The method is based on a previously published procedure based on the ability to couple murine MoAbs to RBCs by chromium chloride.<sup>21</sup> The following mouse hybridoma cell lines were

obtained from American Type Culture Collection (ATCC, Rockville, MD): OKM1 (IgG2b, ATCC CRL 8026) reactive with human granulocytes, monocytes, NK cells and committed myeloid precursor cells (CD11b antigen); and T12 (IgM, clone 3Pt12B8; ATCC HB8136) reacting with human T cells and some B cells (CD6 antigen). Partially purified preparations of these MoAbs were obtained by ammonium sulphate precipitation of spent culture supernatants of each hybridoma. ABO-Rh-compatible, irradiated (25 Gy), and filtered human red blood cells (HRBCs) were obtained from the Blood Bank. For coating with MoAbs, 150 mL of packed HRBCs were washed three times in normal saline (centrifugation at 3000 RPM for 5 minutes at room temperature) with a COBE 2991 apparatus and a blood cell processor set. After the third wash, 30 mL (3 mg/mL) of partially purified MoAbs (CD11b and eventually CD6 in the case of normal donors and T-ALL patients) were added at the same blood processor set. Thereafter, and under continuous agitation, 250 mL of a 0.1% solution of chromium chloride ( $\text{CrCl}_3 \cdot 6\text{H}_2\text{O}$ ; Sigma, St. Louis, MO; prepared in normal saline from a 1% [W/V] stock solution with the pH adjusted to 5.0 with 10 N NaOH) were added dropwise over a 15-minute time period. After incubation for 5 additional minutes at room temperature the reaction was stopped by the addition of 300 mL of phosphate-buffered saline (PBS) supplemented with 2.5% Human Serum Albumin (PBS-HSA). Apparently, the isotype of the antibodies (IgM or IgG) does not affect the coupling process to RBCs. MoAb-coated HRBCs were washed twice, resuspended in 100 mL of PBS 2.5% HSA, and mixed with  $11$  to  $58 \times 10^9$  white blood cells (200 mL final volume, hematocrit less than 5%) obtained from leukaphereses of G-CSF-treated individuals. Rosette formation was performed within the same blood cell processor set by two centrifugation steps at 3000 RPM for 30 minutes. At the end cells were resuspended in 400 mL of PBS 2.5% HSA, transferred, and layered onto the top of 200 mL Ficoll Hypaque (by using a second blood cell processor set), and centrifuged for 45 minutes at 3000 rpm. Nonrosetting cells were harvested at the Ficoll interface and washed twice with PBS-HSA. After 5 minutes of incubation with hypotonic  $\text{NH}_4\text{Cl}$  buffer ( $\text{NH}_4\text{Cl}$  8.99 gr/L,  $\text{KHCO}_3$  1gr/L,  $\text{Na}_4\text{EDTA}$  0.037 gr/L, pH 7.3) to lyse residual erythrocytes, cells were washed with PBS-HSA, resuspended in RPMI 1640 10% FCS, counted, and stained with MoAbs for FACS analysis. The described procedure required approximately 3 hours of work performed by one operator and the estimated cost (including production and purification of antibodies, chemical reagents, tissue culture media, two blood cell separation sets, and 1 U of filtered, irradiated, RBCs) was 400 US dollars.

**Immunomagnetic purging of T or B cells.** To obtain a high degree of T- or B-cell depletion, partially purified hematopoietic progenitors ( $0.5$  to  $13 \times 10^9$  cells) obtained by immune rosetting were labelled with primary unconjugated MoAbs reacting against T cells (anti-CD2 antigen, clone 35.1; IgG2a, ATCC HB222; and anti-CD7, clone WT1, IgG1) or with a panB MoAb (clone HD37, anti CD19, IgG1; kindly provided by Dr. Moldenhauer, Heidelberg, Germany). In MM patients (two cases), cells were incubated with anti-CD19 and anti-CD56<sup>22</sup> (clone N901, IgG1; kindly provided by Dr JD Griffin, Boston, MA). Thereafter, an indirect labelling was performed with goat antimouse magnetic microbeads, according to the manufacturer instructions (Miltenyi Biotec, Germany). After labelling, cells were washed as above, resuspended in PBS-HSA (30 mL final volume), and layered, by the use of a peristaltic pump, onto the top of a type-D depletion column (composed of ferromagnetic fibers) inserted within a SuperMACS apparatus (Miltenyi Biotec). Unstained cells were eluted with PBS-HSA from the column kept within the magnetic field of the cell separator. The T- or B-cell depleted fraction of HPCs was finally resuspended in autologous plasma, counted, phenotypically analyzed, and cryopreserved. The time required to complete this negative depletion was 3 hours and the estimated cost of two vials of goat antimouse magnetic microbeads and one type-D depletion column, necessary for each procedure, was 1,500 US dollars.

**Table 1. Effect of Immune Rosettes on Cellularity of Leukapheresis Obtained From Normal Donors, T- or B-Precursor Acute Lymphoblastic Leukemia (ALL), B-Non-Hodgkins' Lymphoma (B-NHL) and Multiple Myeloma (MM) Patients**

Antibody Used	Normal Donors (n = 18)		T-ALL (n = 10)		B-NHL, B-Precursor ALL and MM (n = 16)	
	Apheresis (—)	Immune Rosettes (CD11b + CD6)	Apheresis (—)	Immune Rosettes (CD11b + CD6)	Apheresis (—)	Immune Rosettes (CD11b)
Total cells ( $\times 10^9$ )	41.3 (29.7-58.2)	3.9 (1-13.7)	28 (12.7-53.4)	3.4 (0.4-8)	20 (11.6-41.4)	2.3 (1.1-4.4)
% overall cell loss		91 (72-97)		88 (77-97)		87 (75-97)
CD34 <sup>+</sup> cells ( $\times 10^9$ )	0.2 (0.07-1)	0.2 (0.06-0.7)	0.3 (0.09-0.8)	0.2 (0.06-0.6)	0.3 (0.1-1.3)	0.3 (0.08-1)
%CD34 <sup>+</sup> cells	0.6 (0.2-1.8)	7.5 (2.3-22.4)	1.2 (0.4-2.8)	10 (4-21)	1.9 (0.6-5.4)	14 (2-28)
%CD34 recovery		92 (67-100)		89 (64-100)		87 (65-100)
%CD34 enrichment fold		15 (3-41)		11 (4-21)		10 (3-35)
CD11b <sup>+</sup> cells ( $\times 10^9$ )	25.5 (15.4-36)	1.8 (0.01-10.8)	21 (7.9-50.6)	1.9 (0.1-6.3)	16.2 (5.5-39.6)	0.5 (0.01-1.2)
%CD11b <sup>+</sup> cells	63 (44-79)	31 (1-83)	70 (50-95)	49 (16-83)	77 (39-98)	20 (0.6-38)
%CD11b <sup>+</sup> cell loss		93 (67-99)		92 (73-98)		96 (83-99)
CD3 <sup>+</sup> cells ( $\times 10^9$ )	12.7 (7-27)	0.9 (0.1-2.7)	5.9 (0.6-14.3)	0.8 (0.1-2.8)	2.7 (0.5-7.9)	1.3 (0.3-3)
%CD3 <sup>+</sup> cells	30 (17-64)	28 (6-62)	29 (1-56)	27 (3-63)	17 (1.4-47)	53 (15-90)
%CD3 <sup>+</sup> cell loss		91 (70-99)		84 (68-98)		48 (11-63)
CD19 <sup>+</sup> cells ( $\times 10^9$ )	2.2 (1-5)	0.6 (0.08-1.2)	0.09 (0.03-0.2)	0.02 (0.002-0.07)	0.06 (0-0.2)	0.01 (0-0.05)
%CD19 <sup>+</sup> cells	5 (2-12)	22 (3-50)	0.4 (0.1-1.4)	0.8 (0.1-3)	0.3 (0-1.2)	0.5 (0-1.8)
%CD19 <sup>+</sup> cell loss		71 (38-96)		76 (38-98)		74 (2-97)

*Molecular evaluation of minimal residual disease (MRD).* In patients with ALL, MRD was evaluated by molecular analysis of junctional regions of rearranged T-cell receptor (TCR)  $\gamma$  or  $\delta$  genes. Specific patterns of recombination of TCR  $\gamma$  or  $\delta$  genes were identified at diagnosis by Southern blot analysis, according to standard techniques.<sup>23</sup> The TCR  $\delta$  and  $\gamma$  gene rearrangements were subsequently amplified by polymerase chain reaction (PCR) with V  $\delta$  or V  $\gamma$  family primers and J  $\delta$  or J  $\gamma$  general primers, respectively. The PCR products were cloned in pMos vector (Amersham, Buckinghamshire, UK) sequenced to define the precise nucleotide sequence of the junctional regions. Based on these sequence data, leukemia-patient-specific oligonucleotide probes were synthesized to analyze subsequent marrow or leukapheretic peripheral blood samples. Reaction products were identified by hybridization studies with DNA oligonucleotide probes labeled with [ $\gamma$  - <sup>32</sup>P] ATP. In one case of B-precursor ALL, MRD monitoring was performed by amplification of the CDRIII IgH with VH and JH consensus primers, as described.<sup>24</sup> Two follicular lymphoma patients bearing the t(14;18) chromosome abnormality were evaluated by PCR analysis of BCL2-IgH rearrangement, according to published methods.<sup>25</sup>

## RESULTS

*Effect of immune rosetting on overall recovery and composition of G-CSF mobilized CPC.* In normal donors receiving G-CSF (10  $\mu$ g/kg/d) for 5 to 6 days, the procedure of CPC mobilization and collection was safe and always well tolerated. The apheretic products were debulked of committed myeloid cells and T lymphocytes by immune rosetting with anti-CD11b and -CD6 antibodies. The experimental procedure of immune rosetting was always carried out on the second or third harvest after a sufficient amount of unmodified CPCs were used or stored in liquid nitrogen. As shown in Table 1, 18 experiments were performed with a median starting cellularity of  $41.3 \times 10^9$  (range, 29.7 to 58.2) nucleated cells. After immune rosetting, the median reduction of the initial cellularity was 91% (range, 72 to 97) and the cell loss was mainly due to a marked (more than 85%) depletion of myeloid cells and T lymphocytes. A parallel enrichment of CD34<sup>+</sup> cells was obtained (more than

**Table 2. T-Cell Depletion by Immune Rosettes and T-cell-specific Magnetic Microbeads (CD2 + CD7) Obtained From Normal Donors and T-ALL Patients**

Antibody Used	Normal Donors (n = 9)			T-ALL (n = 7)		
	Apheresis (—)	Immune Rosettes (CD11b + CD6)	D-column (CD2 + CD7)	Apheresis (—)	Immune Rosettes (CD11b + CD6)	D-column (CD2 + CD7)
Total cells ( $\times 10^9$ )	43.7 (17.2-66)	5.7 (1-13.8)	3.5 (0.1-10.8)	33.9 (18.2-53.4)	4.4 (1.7-8)	2.5 (0.9-6)
% overall cell loss		88 (76-96)	93 (83-99)		86 (77-96)	92 (83-97)
CD34 <sup>+</sup> cells ( $\times 10^9$ )	0.3 (0.07-1)	0.2 (0.08-0.7)	0.2 (0.06-0.5)	0.4 (0.2-0.8)	0.3 (0.2-0.6)	0.3 (0.1-0.6)
%CD34 <sup>+</sup> cells	0.7 (0.2-1.8)	5.3 (2.7-7.9)	14 (3-37)	1.3 (0.4-2.8)	9 (4-21)	14 (4-25)
%CD34 recovery		87 (59-100)	76 (53-100)		92 (69-100)	73 (57-100)
%CD34 enrichment fold		12 (3-41)	28 (3-74)		9 (4-21)	14 (5-28)
CD11b <sup>+</sup> cells ( $\times 10^9$ )	29.3 (11.4-50.2)	3 (0.1-11.6)	1.9 (0.02-10.2)	25.9 (9.1-50.6)	2.7 (6.3-9.7)	1.2 (0.02-3)
%CD11b <sup>+</sup> cells	67 (54-79)	38 (7-84)	38 (2-95)	71 (50-95)	59 (18-83)	39 (0.2-78)
%CD11b <sup>+</sup> cell loss		91 (72-99)	95 (80-100)		89 (73-96)	94 (87-100)
CD3 <sup>+</sup> cells ( $\times 10^9$ )	11.6 (3.8-20.9)	1.4 (0.3-4.1)	0.02 (0.0002-0.1)	6 (0.6-14.3)	1 (0.1-2.8)	0.008 (0.0007-0.03)
%CD3 <sup>+</sup> cells	26 (9-49)	36 (6-81)	0.3 (0.1-1)	23 (1-49)	23 (3-63)	0.2 (0.1-0.5)
%CD3 <sup>+</sup> cell loss		84 (57-98)	99.7 (99.4-100)		82 (68-96)	99.9 (99.2-100)
CD19 <sup>+</sup> cells ( $\times 10^9$ )	1.8 (0.6-2.8)	0.6 (0.08-1)	0.3 (0.02-0.7)	0.1 (0.06-0.2)	0.03 (0.003-0.07)	0.01 (0.0006-0.05)
%CD19 <sup>+</sup> cells	4 (2-7)	16 (3-50)	29 (0.2-69)	0.4 (0.1-1.4)	0.5 (0.1-1.5)	0.3 (0.1-0.8)
%CD19 <sup>+</sup> cell loss		71 (61-87)	82 (66-98)		74 (38-98)	84 (20-99)

**Table 3. B-Cell Depletion by Immune Rosettes and B-Cell-Specific Magnetic Microbeads (CD19) of Leukaphereses Obtained From B-NHL, B-precursor ALL, or MM Patients**

Antibody Used	B-NHL, B-precursor ALL and MM (n = 17)		
	Apheresis (—)	Immune Rosettes (CD11b)	D-column (CD19 <sup>+</sup> )
Total cell ( $\times 10^9$ )	19.4 (8.6-41.4)	2.4 (1.1-4.4)	2 (0.9-3.6)
% overall cell loss		85 (52-97)	87 (59-98)
CD34 <sup>+</sup> cells ( $\times 10^9$ )	0.3 (0.07-1.3)	0.3 (0.06-1)	0.2 (0.05-1)
%CD34 <sup>+</sup> cells	1.8 (0.6-5.4)	12 (1.5-28)	14 (1.5-37)
%CD34 recovery		85 (53-100)	80 (48-100)
%CD34 enrichment fold		9 (2-35)	10 (2-42)
CD11b <sup>+</sup> cells ( $\times 10^9$ )	15 (3.1-39.6)	0.4 (0.01-1.2)	0.2 (0.005-0.9)
%CD11b <sup>+</sup> cells	72 (37-98)	19 (0.6-38)	11 (0.4-28)
%CD11b <sup>+</sup> cell loss		96 (83-100)	97 (87-100)
CD3 <sup>+</sup> cells ( $\times 10^9$ )	3.3 (0.5-8.4)	1.4 (0.4-3)	1.3 (0.4-2.6)
%CD3 <sup>+</sup> cells	22 (1.4-55)	58 (34-90)	62 (42-92)
%CD3 <sup>+</sup> cell loss		48 (11-78)	52 (16-79)
CD19 <sup>+</sup> cells ( $\times 10^9$ )	0.06 (0-0.2)	0.02 (0-0.09)	0.0004 (0-0.004)
%CD19 <sup>+</sup> cells	0.4 (0-2)	0.6 (0-2.3)	0.02 (0-0.1)
%CD19 <sup>+</sup> cell loss		72 (2.2-97)	99 (94-100)

\*In two MM patients purging experiments were performed by using anti-CD19 and anti-CD56 magnetic microbeads.

10-fold) with a median recovery of HPCs of 92% (range, 67 to 100). Similar results were obtained by using autologous CPCs collected in T-ALL patients after high-dose chemotherapy and G-CSF administration. Due to the effect of high-dose chemotherapy, the starting cellularity, as well as the absolute number of CD3<sup>+</sup> cells, was lower than that observed in the apheresis obtained from normal allogeneic donors, whereas the amount of CD34<sup>+</sup> cells was significantly higher (Table 1). Nonetheless, the debulking effect of the procedure (88% overall cell loss, with more than 84% of mean CD3<sup>+</sup> cell loss), as well as the absolute recovery and the enrichment fold of CD34<sup>+</sup> cells, was remarkably similar. In patients with B precursor ALL and B-NHL the apheretic products were debulked by immune rosetting with RBCs coated with CD11b only. Also, in this case, the initial cellularity and the absolute number of T and B lymphocytes were less abundant as compared to normal donors. As expected, the loss of CD3<sup>+</sup> cells was lower, even though the overall reduction obtained by immune rosettes was similar.

*Highly efficient depletion of T cells by anti-CD2-CD7 or B cells by anti-CD19 magnetic microbeads.* To purge the contaminating normal or neoplastic T lymphocytes still present in the apheretic products after the debulking procedure with

immune rosettes, partially purified allogeneic (9 experiments from normal donors) or autologous (7 experiments from T-ALL patients) CPCs were incubated with a mixture of anti-CD2 and -CD7 MoAbs and indirectly stained with goat antimouse magnetic microbeads. After loading onto a D-type depletion column, normal or leukemic contaminating T cells were significantly removed as judged by staining with anti-CD3 MoAbs (Table 2) and other T-cell-specific antigens like CD5, CD4, and CD8 (data not shown). The overall T-cell depletion obtained by the two combined procedures allowed a final 3 to 4 logs reduction of the T-cell content. Despite such aggressive removal of T cells, the median overall recovery of CD34<sup>+</sup> cells was above 70% in both autologous and allogeneic CPCs (Table 2). Similar experiments were performed to remove B cells in CPCs obtained from patients with B-precursor ALL, B-NHL, and MM. As shown in Table 3, the percent and the absolute number of CD19<sup>+</sup> cells detectable after this purification approach were very limited. Again, the absolute recovery of CD34<sup>+</sup> cells from the initial leukapheresis was excellent, with a mean value above 80%.

*Evaluation of MRD.* A PCR-based quantitation of MRD was performed on CPC samples obtained from five patients before and after depletion of contaminating tumor B or T lymphocytes by purging with lineage-specific immunobeads. Molecular analysis was performed by demonstration of chimeric genomic products generated by the t(14;18) chromosomal translocation or by analysis of leukemia-specific DNA sequence, amplified from the rearranged TCR  $\gamma$ ,  $\delta$ , or IgH chain genes. As shown in Table 4, after the purification procedure, CD19-purged HPCs obtained from two follicular NHLs and two B-precursor ALLs were judged as PCR negative within the sensitivity limits of our assays (between  $10^{-4}$  to  $10^{-5}$ ). Similarly, after purging with T-cell-specific microbeads the PCR evaluation of DNA samples from a T-ALL patient showed the absence of the leukemic-specific clone (Table 4 and Fig 1). Interestingly, in this case the amount of MRD was very limited and not detectable if searched within the whole unmodified apheretic product (Fig 1). However, the leukemic contamination was clearly shown in the unwanted, wasted, T-cell fraction retained within the magnetic column. Similar results were obtained in all the analyzed cases in which the neoplastic B-lymphoid cells were similarly trapped within the depletion column (Table 4).

*Transplantation of T- or B-cell purged autologous and allogeneic CPC.* We performed autologous transplantation in three patients by using CPCs highly purified by immune rosetting and immunomagnetic purging. In the case of the T-ALL patient presented in Fig 1, after a myeloablative therapy with high-dose Ara-C ( $2 \text{ g/m}^2 \times 2/\text{d}$  for 6 days) and fractionated total body irradiation (TBI, 12cGy), the purified, leukemia-free

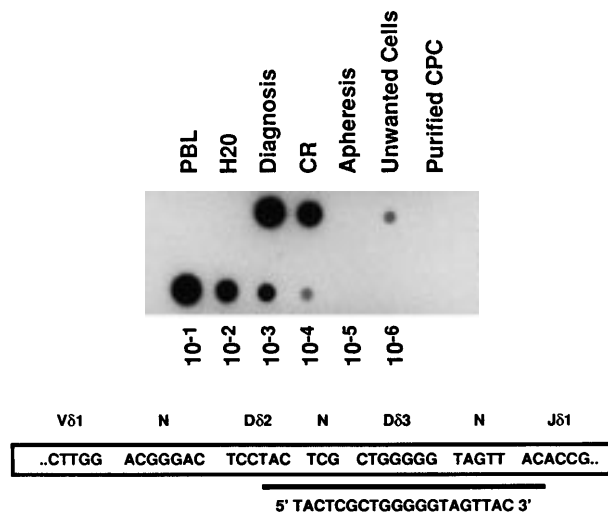
**Table 4. Molecular Evaluation of Minimal Residual Disease After Lineage-Specific Purging**

Patients	Disease		Apheresis	Wasted Cells*	Purified Stem Cells	Sensitivity†
1	NHL	t(14;18) BCL2/IgH	+	+	—	$10^5$
2	NHL	t(14;18) BCL2/IgH	+	+	—	$10^5$
3	preB-ALL	TcR $\gamma$ (V $\gamma$ 4-J $\gamma$ 1.3)	+	+	—	$10^4$
4	T-ALL	TcR $\delta$ (V $\delta$ 1-J $\delta$ 1)	—	+	—	$10^4$
5	preB-ALL	IgH	+	+	—	$10^4$

\*Wasted cells were eluted after removal of the D column from the magnetic field of the SuperMACS apparatus.

†The sensitivity of the PCR reaction was determined by log dilution of the patient's DNA obtained at diagnosis with DNA from a normal donor.





**Fig 1.** Detection of MRD by PCR analysis of V $\delta$ 1-J $\delta$ 1 junction of the TCR  $\delta$  gene in a T-ALL patient. DNA samples were extracted from bone marrow aspirates performed at the onset of the disease (Diagnosis), at the end of induction chemotherapy when it was considered in complete hematologic remission (CR), from unmanipulated G-CSF mobilized CPC obtained after a consolidation course with high dose chemotherapy (Apheresis), from cells coated by anti-CD2 and -CD7 magnetic microbeads and retained within the depletion column (Unwanted cells), from the purified T-cell depleted fraction of circulating progenitor cells (Purified CPC), and from the peripheral blood lymphocytes of a normal donor (PBL). The sensitivity of the PCR reaction was checked by serial log dilution of the patient's DNA obtained at diagnosis with DNA from a normal donor (lower lane of the figure). PCR products were blotted onto nylon membranes and hybridized with the indicated clonospecific probe labeled with ( $\gamma$ -<sup>32</sup>P) ATP.

fraction of HPCs obtained at the end of the purification procedure ( $6.8 \times 10^6$  /kg CD34<sup>+</sup> cells) was autografted. The neutrophil engraftment (more than  $1.5 \times 10^9$ /L) was observed after 12 days and more than 20 and  $100 \times 10^9$  /L platelets were counted at days +15 and +30, respectively. Interestingly, the molecular evaluation of the bone marrow 100 days after transplantation did not show persistence of leukemic cells within the patient (data not shown). Similar results were obtained in two MM patients resistant to conventional chemotherapy and who underwent transplantation after a high-dose Melphalan (200 mg/m<sup>2</sup>) conditioning regimen, with CD19 and CD56 purged stem cells.<sup>26,27</sup> The numbers of infused CD34<sup>+</sup> cells were 8.3 and  $10 \times 10^6$  /kg CD34<sup>+</sup> cells, respectively. A rapid hematologic engraftment was observed in both patients, because more than  $1.5 \times 10^9$ /L neutrophils were counted at days +10 and +11 and more than  $20 \times 10^9$ /L platelets were counted at day +14 (Table 5).

Because the use of unmodified allogeneic CPC has been possibly associated with increased chronic GVHD<sup>28</sup> in six acute leukemia patients undergoing transplantation from HLA-identical siblings, allogeneic CPCs were extensively T-cell depleted by immune rosetting and immunomagnetic purging. However, to prevent an increased rate of graft failure and leukemia relapse,<sup>29</sup> escalating moderate<sup>30</sup> amounts of donor T lymphocytes (from a minimum of 2.5 to a maximum of  $50 \times 10^6$  /kg) were rescued from the rosetted cells (by hypotonic lysis with NH<sub>4</sub> Cl buffer, as described in Materials and Methods), enumerated by immunophenotyping with anti-CD3 antibody, and added back to the stem cell fraction just before cryopreservation. Only two apheretic procedures were necessary to infuse more than  $5 \times 10^6$  /kg CD34<sup>+</sup> cells and despite the in vitro manipulation, a prompt hematologic reconstitution was observed in each patient (Table 6). According to previously published experience,<sup>16,17</sup> a conventional GVHD prophylaxis with a combination of Methotrexate and Cyclosporine A was performed<sup>20,31</sup> and neither acute (more than grade I) or chronic GVHD was observed in these patients.

## DISCUSSION

The manipulation of specific cell subpopulations of marrow or peripheral blood origin has become an interesting way to increase the applicability and reduce the toxicity of hematopoietic transplantation. However, the manipulation of CPCs obtained from G-CSF treated normal donors or patients is hampered by the huge cellularity present in the apheretic products, which often exceeds the absolute number of  $50 \times 10^9$  cells, and by the fact that under the stimulatory effect of G-CSF, mature myeloid cells (mostly granulocytes) acquire different characteristics of cell density preventing their sedimentation on normal Ficoll gradients. Therefore, two main approaches to the CD34<sup>+</sup> purification have been taken either by positive or by negative selection. Indeed, in the perspective of genetic manipulation, positive selection of CD34<sup>+</sup> cells is likely to be the ideal option to ensure that the selected gene is transduced only in the small target population of pluripotent progenitor cells.<sup>32</sup> Although transplantation of positively selected CD34<sup>+</sup> cells purified by immunoaffinity columns or immunomagnetic bead adsorption has been shown as a feasible procedure,<sup>4,9,11-15</sup> the specific depletion of unwanted cells seems preferable for several reasons including the preservation of the manipulation of CD34<sup>+</sup> cells from binding with murine MoAbs and the need of their subsequent detachment by using chemical or physical methods. Moreover, most acute leukemias of both myeloid and lymphoid origin are positive for CD34 antigen expression thus reducing in this setting the clinical applicability of methods that rely only on the positive selection of the stem cell fraction. On

**Table 5. Hematologic Reconstitution After Autologous Transplantation On Lineage-Specific Purging With Magnetic Microbeads**

Patients	Disease	Age	Conditioning Regimen	Composition of CPCs				Days From BMT Graft Infusion Until:			
				TNC $\times 10^9$ /kg	CD34 <sup>+</sup> $\times 10^6$ /kg	CD3 <sup>+</sup> $\times 10^6$ /kg	CD19 <sup>+</sup> $\times 10^6$ /kg	ANC > 500/mcl	ANC > 1500/mcl	Plt > 20000/mcl	Plt > 50000/mcl
1	T-ALL	47	Ara-C/TBI	74	6.8	0.1	0.1	9	11	14	16
2	MM	61	Melphalan	18	8.3	2.3	0.01	10	11	14	15
3	MM	59	Melphalan	29	10	13	0.09	10	11	10	12

Abbreviations: ANC, absolute neutrophil count; Plt, platelets; TNC, total nucleated cells.

**Table 6. Effect of T-Cell Dose on the Quality and Timing of Short-Term Hematological Engraftment after CPC Allogeneic Transplantation**

Patients	Disease	Age	Conditioning Regimen	Composition			Days from BMT Graft Infusion Until:			
				TNC ×10 <sup>6</sup> /kg	CD34 <sup>+</sup> ×10 <sup>6</sup> /kg	CD3 <sup>+</sup> ×10 <sup>6</sup> /kg	ANC > 500/mcl	ANC > 1500/mcl	Pit > 20000/mcl	Pit > 50000/mcl
1	T-ALL	24	TBI/Melphalan	120	7.5	2	12	13	14	50
2	AML	59	TBI/Melphalan	90	9	10	10	11	12	14
3	B-precursor ALL	43	TBI/Melphalan	120	10.5	15	20	21	26	40
4	B-precursor/ALL	18	TBI/Melphalan	290	19.5	15	9	11	10	16
5	B-precursor ALL	45	TBI/Melphalan	80	5.2	40	11	12	11	14
6	T-ALL	31	TBI/Melphalan	470	11.4	50	14	15	14	16
Media		36.7 (18 to 59)		195 (80 to 470)	10.5 (5.2 to 19.5)	22 (2 to 50)	12.6 (9 to 20)	13.8 (11 to 21)	14.5 (10 to 26)	25 (14 to 50)

the contrary, the selective elimination of residual neoplastic cells detectable in the stem cell fraction obtained from some patients with MM,<sup>33</sup> follicular lymphoma,<sup>34</sup> and breast cancer<sup>35</sup> could be achieved by the use of MoAbs either in association with complement,<sup>36</sup> conjugated to toxic compounds,<sup>37</sup> or by the use of magnetic microbeads proven to eradicate the neoplastic clone at the molecular level.<sup>25,38</sup> However, it has to be mentioned that positive selection of CD34<sup>+</sup> cells, combined with negative depletion steps, could also achieve high levels of purity,<sup>39</sup> even though purging strategies based only on depletion techniques could avoid an extensive removal of T cells from the autograft of patients with B-lymphoproliferative disorders and solid tumors, thus reducing the risk of long-lasting immunodeficiency.

In this manuscript, we described a simple and reproducible method based on a two-step negative selection of cytokine mobilized circulating progenitor cells. With the first step of immune rosetting and subsequent Ficoll gradients we were able to obtain a drastic reduction of the massive starting cellularity of the leukapheretic products. The use of human RBCs suitable for transfusion and the fact that the whole procedure was performed by using clinical grade devices without the use of tubes or pipettes reduces the risk of microbiological contaminations and represents a crucial advantage of this approach. Most importantly, the consistent reduction of the mature myeloid cells without a significant loss of CD34<sup>+</sup> cells allows a subsequent further effective purification of the human hematopoietic stem cells either by positive selection of the CD34<sup>+</sup> cells or by further purging of the contaminating T- or B-cell fraction depending on the specific medical need. The results we obtained showed that we can specifically and reproducibly remove from the graft several logs of normal T cells as well as of contaminating tumor cells as assessed by PCR analysis.

The infusion of sibling-matched allogeneic hematopoietic stem cells purified according to this method, along with the add back of escalating amounts of T cells, was followed by a rapid hematologic engraftment, thus confirming the lack of any toxicity associated with the purification procedure.

In the setting of autologous transplantation, our data showed that an efficient purification of neoplastic B- or T-lymphoid cells could be reached and in the five cases analyzed at the molecular level, a disappearance of the neoplastic clone could be shown. Several obvious advantages are potentially associated with the use of purified stem cells for autologous hematopoietic transplantation in acute leukemia<sup>40</sup> and lymphoma.<sup>41</sup> We know that many patients can eventually relapse and die from their disease because of the infusion of tumor cells along with the autologous

graft.<sup>42,43</sup> Indeed, MRD persistence after autologous transplantation in NHL patients is associated with poor outcome, thus suggesting that neoplastic contamination of the graft should be eradicated for cure.<sup>41</sup> The possibility of eradicating the residual leukemic cells in the apheretic product represents an important result because very little data about effective immunologic purging of ALL are available so far. Obviously, whereas these data represent a clear demonstration of the technical feasibility of a rapid and reproducible two-step purging procedure of cytokine-mobilized HPCs, the clinical outcome of autologous and allogeneic transplants in the diverse proposed clinical settings waits for future validation.

## REFERENCES

1. Krause DS, Fackler MJ, Civin CI, May S: CD34: Structure, biology, and clinical utility. *Blood* 87:1, 1996
2. To LB, Haylock DN, Simmons PJ, Juttner CA: The biology and clinical use of blood stem cells. *Blood* 89:2233, 1997
3. Lowenberg B, Voogt P: Autologous stem cell transplantation and purging. *J Clin Oncol* 14:2194, 1996
4. Link H, Arseniev L, Bahre O, Kadar JG, Diedrich H, Poliwoda H: Transplantation of allogeneic CD34<sup>+</sup> blood cells. *Blood* 87:4903, 1996
5. Dilloo D, Rill D, Entwistle C, Boursnell M, Zhong W, Holden W, Hommaday M, Inglis S, Brenner M: A novel Herpes vector for the high-efficiency transduction of normal and malignant human hematopoietic cells. *Blood* 89:119, 1997
6. Ward M, Richardson C, Pioli P, Smith L, Podda S, Goff S, Hesdorffer C, Bank A: Transfer and expression of human multiple drug resistance gene in human CD34<sup>+</sup> cells. *Blood* 84:1408, 1994
7. Shpall EJ, Jones RB: Release of tumors cells from bone marrow. *Blood* 83:623, 1994
8. Brugger W, Bross KJ, Glatt M, Weber F, Mertelsmann R, Kanz L: Mobilization of tumors cells and hematopoietic progenitor cells into peripheral blood of patients with solid tumors. *Blood* 83:636, 1994
9. Lemoli RM, Fortuna A, Motta MR, Rizzi S, Giudice V, Nannetti A, Martinelli G, Cavo M, Amabile M, Mangianti S, Fogli M, Conte R, Tura S: Concomitant mobilization of plasma cells and hematopoietic progenitors into peripheral blood of multiple myeloma patients: Positive selection and transplantation of enriched CD34<sup>+</sup> cells to remove circulating tumors cells. *Blood* 87:1625, 1996
10. Rill DR, Santana VM, Roberts WM, Nilson T, Bowman LC, Krance RA, Heslop HE, Moen RC, Ihle JN, Brenner MK: Direct demonstration that autologous bone marrow transplantation for solid tumors can return a multiplicity of tumorigenic cells. *Blood* 84:380, 1994
11. Gorin NC, Lopez M, Laporte JP, Quittet P, Lesage S, Lemoine F, Berenson RJ, Isnard F, Grande M, Stachowiak J, Labopin M, Fouillard L, Morel P, Jouet JP, Noel-Walter MP, Detourmignies L, Aoudjane M, Bauters F, Najman A, Douay L: Preparation and successful engraftment

of purified CD34<sup>+</sup> bone marrow progenitor cells in patients with non-Hodgkin's lymphoma. *Blood* 85:1647, 1995

12. Shpall EJ, Janes RB, Bearman SJ, Franklin WA, Archer PG, Curiel T, Bitter M, Claman HN, Stemmer SM, Purdy M, Myers SE, Hami L, Taffs S, Heimfeld S, Hallagan J, Berenson RJ: Transplantation of enriched CD34-positive autologous marrow into breast cancer patients following high-dose chemotherapy: Influence of CD34-positive peripheral-blood progenitors and growth factors on engraftment. *J Clin Oncol* 12:28, 1994
13. Berenson RJ, Besinger WI, Hill RS, Andrews RG, Garcia-Lopez J, Kalamasz DF, Still BJ, Spitzer G, Buckner CD, Bernstein ID, Thomas ED: Engraftment after infusion of CD34<sup>+</sup> cells in patients with breast cancer or neuroblastoma. *Blood* 84:1241, 1994
14. Berger KM, Rapatel C, de Lumley L, Lutz P, Plantaz D, Vannier JP, Bergeron C, Mechinaud F, Favrot M, Bonhomme J, Travade P, Demeoco F: CD34<sup>+</sup> cell immunoselection from G-CSF-alone-primed peripheral blood in children with low body mass. *Br J Haematol* 91:431, 1995
15. Alcorn MJ, Holyoake TL, Richmond L, Pearson C, Farrel E, Kyle B, Dunlop DJ, Fitzsimons E, Steward WP, Pragnell IB, Franklin IM: CD34-positive cells isolated from cryopreserved peripheral-blood progenitor cells can be expanded ex vivo and used for transplantation with little or no toxicity. *J Clin Oncol* 14:1839, 1996
16. Bensinger WI, Buckner CD, Shanon-Dorcy K, Rowley S, Appelbaum FR, Benyunes M, Clift R, Martin P, Derimer T, Storb R, Lee M, Schiller G: Transplantation of allogeneic CD34<sup>+</sup> peripheral blood stem cells in patients with advanced hematologic malignancy. *Blood* 88:4132, 1996
17. Urbano-Ispizua A, Rozman C, Martinez C, Marin P, Briones J, Rovira M, Feliz P, Viguria MC, Merino A, Sierra J, Mazzara R, Carreras E, Montserrat E: Rapid engraftment without significant graft-versus-host disease after allogeneic transplantation of CD34<sup>+</sup> selected cells from peripheral blood. *Blood* 89:3967, 1997
18. Delain M, Cahn JY, Racadot E, Flesch M, Plouvier E, Mercier M, Tiberghien P, Pavy JJ, Deschaseaux M, Deconinck E, Couteret Y, Brion A, Herve P: Graft failure after T cell depleted HLA identical allogeneic bone marrow transplantation: Risk factors in leukemic patients. *Leuk Lymphoma* 11:359, 1993
19. Cortelazzo S, Viero P, Bellavita P, Rossi A, Buelli M, Borleri GM, Marchioli S, Bassan R, Comotti B, Rambaldi A, Barbui T: Granulocyte colony stimulating factor following peripheral blood progenitor cells transplant in non-Hodgkin's lymphoma. *J Clin Oncol* 13:935, 1995
20. Rambaldi A, Viero P, Bassan R, Buelli M, Rossi A, Bellavita P, Spinelli O, Amaru R, Micheletti M, Borleri G, Cortelazzo S, Comotti B, Barbui T: G-CSF-mobilized peripheral blood progenitor cells for allogeneic transplantation of resistant or relapsing acute leukemias. *Leukemia* 10:860, 1995
21. Anderson KC, Griffin JD, Bates MP, Slaughenhaupt BL, Schlossman SF, Nadler LM: Isolation and characterization of human B lymphocyte enriched population. I. Purification of B cells by immune rosette depletion. *J Immunol Methods* 61:283, 1983
22. Van Camp B, Durie BGM, Spier C, De Waele M, Van Riet I, Vela E, Fruttiger Y, Richter L, Grogan TM: Plasma cells in multiple myeloma express a natural killer cell-associated antigen: CD56 (NKH-1; Leu-19). *Blood* 76:377, 1990
23. Biondi A, Rambaldi A: Polymerase chain reaction (PCR) approach for the evaluation of minimal residual disease in acute leukemia. *Stem Cells* 12:394, 1994
24. Steward CG, Potter MN, Oakhill A: Third complementary determining region (CDRIII) sequence analysis in childhood B-lineage acute lymphoblastic leukemia: Implication for the design of oligonucleotide probes for use in monitoring minimal residual disease. *Leukemia* 6:1213, 1992
25. Gribben JG, Saporito L, Barber M, Blake KW, Edwards RM, Griffin JD, Freedman AS, Nadler LM: Bone marrow of non-Hodgkin's lymphoma patients with a bcl-2 translocation can be purged of polymerase chain reaction-detectable lymphoma cells using monoclonal antibodies and immunomagnetic beads depletion. *Blood* 80:1083, 1992
26. Bergsagel PL, Smith AM, Szczepek A, Mant MJ, Belch AR, Pilarski LM: In multiple myeloma, clonotypic B lymphocytes are detectable among CD19<sup>+</sup> peripheral blood cells expressing CD38, CD56 and monotypic Ig light chain. *Blood* 85:436, 1995
27. Szczepek AJ, Bergsagel PL, Axelsson L, Brown CB, Belch AR, Pilarski LM: CD34<sup>+</sup> cells in the blood of patients with multiple myeloma express CD19 and IgH mRNA and have patients-specific IgH VDJ gene rearrangements. *Blood* 89:1824, 1997
28. Majolino I, Saglio G, Scimé R, Serra A, Cavallaro AM, Fiandaca T, Vasta S, Pampinella M, Catania P, Indovina A, Marcenò R, Santoro A: High incidence of chronic GVHD after primary allogeneic peripheral blood stem cells transplantation in patients with hematologic malignancies. *Bone Marrow Transplant* 17:555, 1996
29. Marmont A, Horowitz MM, Gale RP, Sobocinski K, Ash RC, Bekkum DW, Champlin RE, Dicke KA, Goldman RA, Herzing RH, Hong R, Masaoka T, Rimm AA, Ringden O, Speck B, Weiner RS, Bortin MM: T-cell depletion of HLA identical transplant in leukemia. *Blood* 78:2120, 1991
30. Verdonck LF, Dekker AW, de Gast GC, van Kempen ML, Lokhorst HM, Nieuwenhuis HK: Allogeneic bone marrow transplantation with a fixed low number of T cells in the marrow graft. *Blood* 83:3090, 1994
31. Storb R, Deeg HJ, Whithead J, Appelbaum F, Beatty P, Bensinger WI, Buckner CD, Clift R, Doney K, Farewell V, Hansen J, Hill R, Lum R, Martin P, McGuffin R, Sanders J, Stewart P, Sullivan K, Witherspoon R, Yee J, Thomas ED: Methotrexate and cyclosporine compared with cyclosporine alone for prophylaxis of acute-graft-versus-host disease after marrow transplantation for leukemia. *N Engl J Med* 314:729, 1986
32. Dunbar CE, Cottler-Fox M, O'Shaunessy JA, Doren S, Carter C, Berenson R, Brown S, Moen RC, Greenblatt J, Stewart FM, Leitman SF, Wilson VH, Cowan K, Young NS, Nienhuis AW: Retrovirally marked CD34-enriched peripheral blood and marrow cells contribute to long-term engraftment after autologous transplantation. *Blood* 85:3048, 1995
33. Willems P, Croockewit R, Raymakers R, Holdrinet G, van der Bosh G, Huys E, Mesink E: CD34<sup>+</sup> selection from myeloma peripheral blood cell autografts contain residual tumor cells due to impurity, not to CD34<sup>+</sup> myeloma cells. *Br J Haematol* 93:613, 1996
34. Macintyre EA, Belanger C, Debert C, Canioni D, Turhan AG, Azagury M, Hermine O, Varet B, Flandrin G, Schmitt C: Detection of clonal CD34<sup>+</sup>19<sup>+</sup> progenitors in bone marrow of BCL2-IgH-positive follicular lymphoma patients. *Blood* 86:4691, 1995
35. Mapara MY, Korner IJ, Hildebrandt M, Bargou R, Krahl D, Reichardt P, Dorken B: Monitoring of tumor cell purging after highly efficient immunomagnetic selection of CD34 cell from leukapheresis products in breast cancer patients: Comparison of immunocytochemical tumor cell staining and reverse transcriptase-polymerase chain reaction. *Blood* 89:337, 1997
36. Anderson KC, Ritz J, Takvorian T, Coral F, Daley H, Gorgone BC, Freedman AS, Canellos GP, Schlossman SF, Nadler LM: Hematologic engraftment and immune reconstitution posttransplantation with anti-B1 purged autologous bone marrow. *Blood* 69:597, 1987
37. Uckun FM, Reaman GH: Immunotoxins for treatment of leukemia and lymphoma. *Leuk Lymphoma* 18:195, 1995
38. Di Nicola M, Siena S, Corradini P, Bregni M, Milanese M, Magni M, Ruffini PA, Ravagnani F, Tarella C, Gianni AM: Elimination of bcl-2-positive follicular lymphoma cells from blood transplants with high recovery of haematopoietic progenitors by the Miltenyi CD34<sup>+</sup> cell sorting system. *Bone Marrow Transplant* 18:1117, 1996
39. Bertolini F, Thomas T, Battaglia M, Gibelli N, Pedrazzoli P,

Robustelli della Cuna G: A new two-step procedure for 4.5 log depletion of T and B cells in allogeneic transplantation and of neoplastic cells in autologous transplantation. *Bone Marrow Transplant* 19:615, 1997

40. Soiffer RJ, Roy DC, Gonin R, Murray C, Anderson KC, Freedman AS, Babinowe SAN, Roberts MJ, Spector N, Pesek K, Mauch P, Nadler LM, Ritz J: Monoclonal antibody-purged autologous bone marrow transplantation in adults with acute lymphoblastic leukemia at high risk of relapse. *Bone Marrow Transplant* 12:243, 1993

41. Gribben JG, Freedman AS, Neuberg D, Roy DC, Blake KW, Woo SD, Grossbard ML, Rabinowe SN, Coral F, Freeman GJ, Ritz J, Nadler LM: Immunologic purging of marrow assessed by PCR before

autologous bone marrow transplantation for B-cell lymphoma. *N Engl J Med* 325:1525, 1991

42. Brenner MK, Rill DR, Moen RC, Krance RA, Mirro J, Anderson WF, Ihle JN: Gene-marking to trace origin of relapse after autologous bone-marrow transplantation. *Lancet* 341:85, 1993

43. Deiseroth AB, ZU Z, Claxton D, Hanania EG, Fu S, Ellerson D, Goldberg L, Thomas M, Janicek K, Anderson WF, Hostor J, Korbling M, Durett A, Monn R, Berenson R, Hoinfeld S, Hamer J, Calvert L, Tibbitts P, Talpaz M, Kantarjian H, Champlin R, Reading C: Genetic marking shows that Ph<sup>+</sup> cells present in autologous transplants of chronic myelogenous leukemias (CML) contribute to relapse after autologous bone marrow in CML. *Blood* 83:3068, 1994